


Supporting LGBTQ+ Survivors in Tennessee

Presented By: Phillis Lewis



What Is Love Doesn't Hurt?

Provide services to LGBTQ+ victims of crime while promoting Cultural Humility.

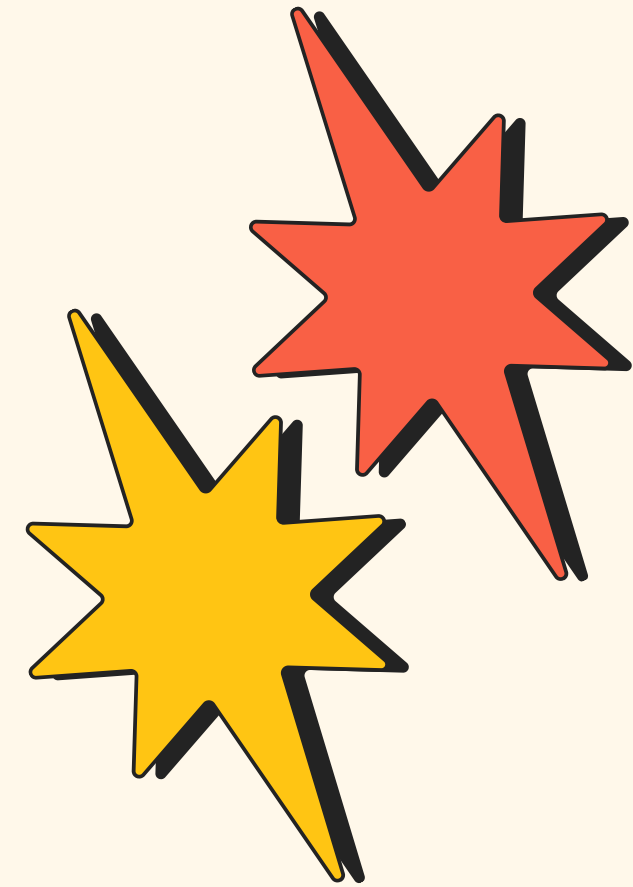
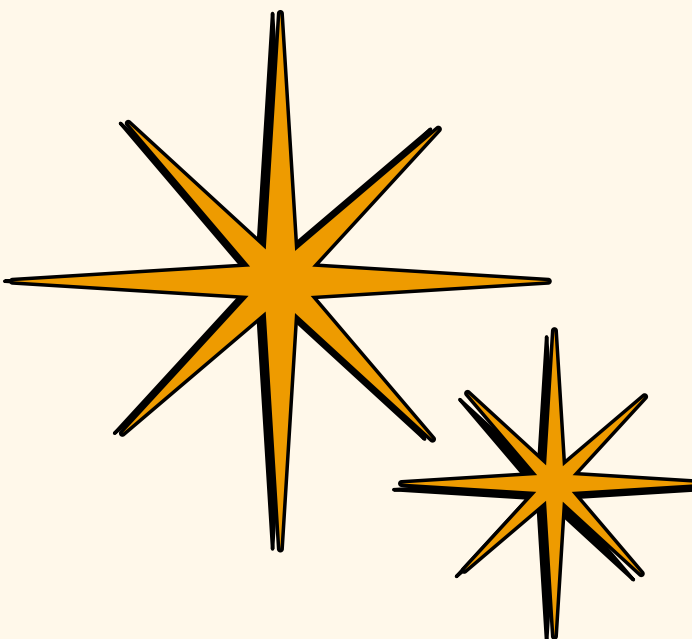


Objectives

- Understand the current environment for LGBTQ+ individuals
- Define key terms
- Recognize barriers
- Learn trauma-informed, increase cultural humility to create affirming services and spaces
- Identify resources and community partners

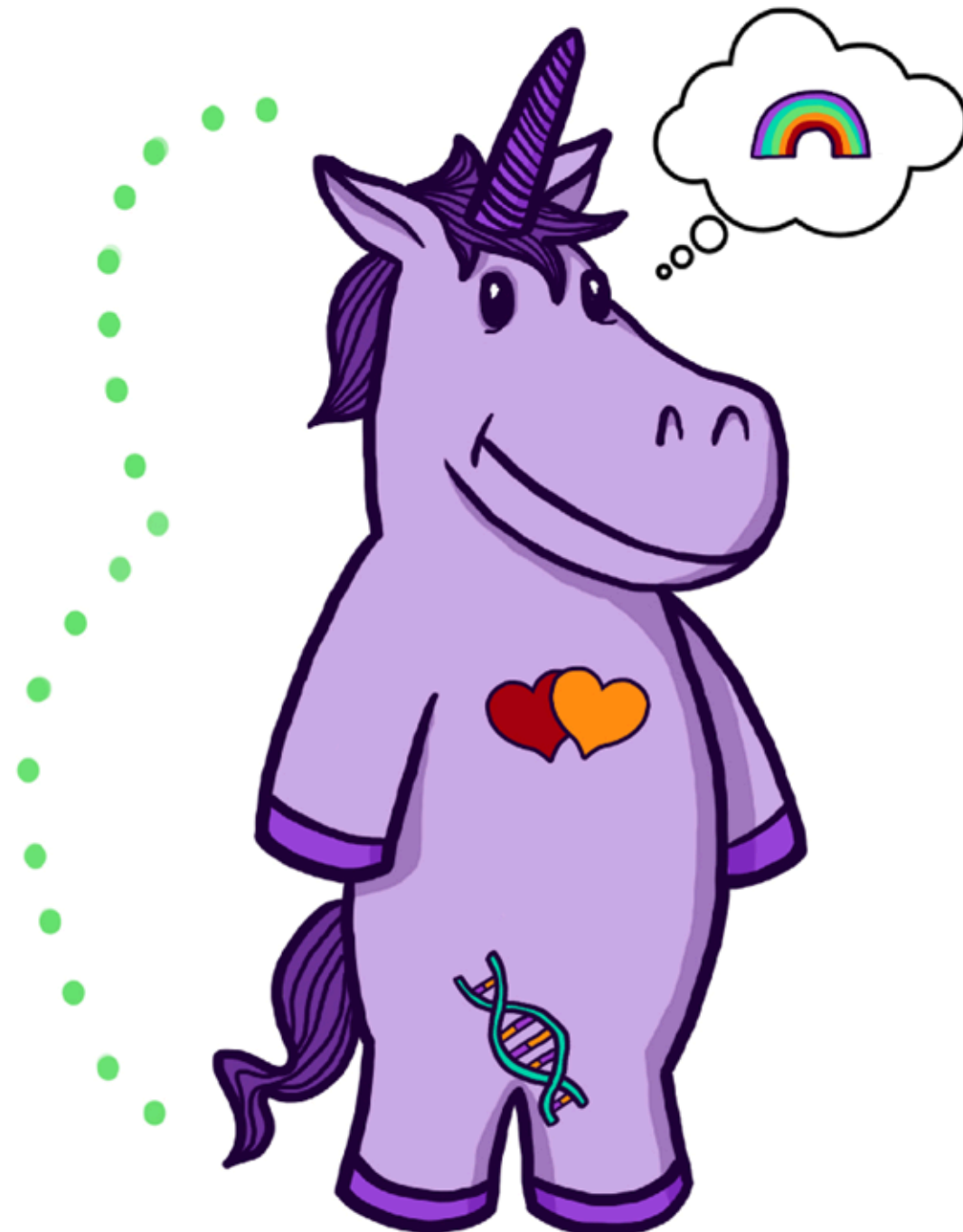


Terminology Concepts

- LGBTQ+
 - Sexual Orientation vs Gender Identity
 - Transgender, Non-Binary, Gender Nonconforming
 - Intersectionality
- 
- 

The Gender Unicorn

Graphic by:
TSER
Trans Student Educational Resources



Gender Identity

Female / Woman / Girl
Male / Man / Boy
Other Gender(s)

Gender Expression

Feminine
Masculine
Other

Sex Assigned at Birth

Female Male Other/Intersex

Physically Attracted to

Women
Men
Other Gender(s)

Emotionally Attracted to

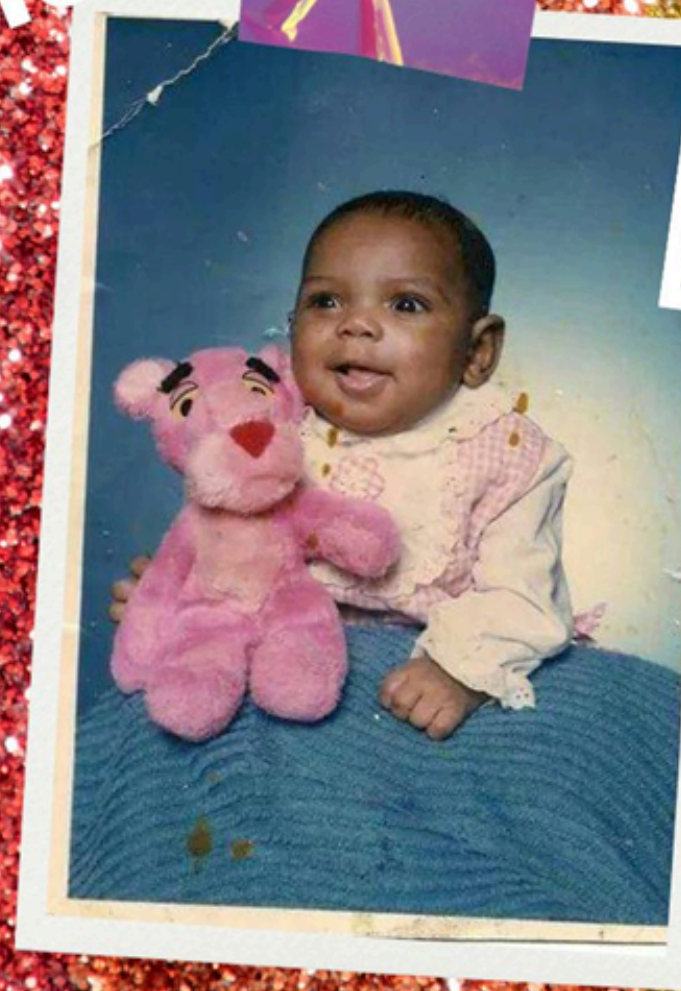
Women
Men
Other Gender(s)

To learn more, go to:
www.transstudent.org/gender

Design by Landyn Pan and Anna Moore

Gender Unicorn Breakdown

Biological sex



**Gender
Identity**


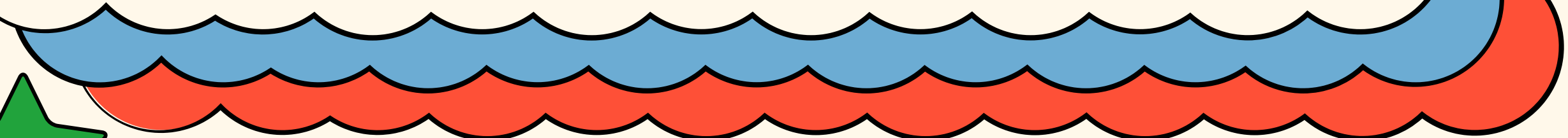


Gender Expression





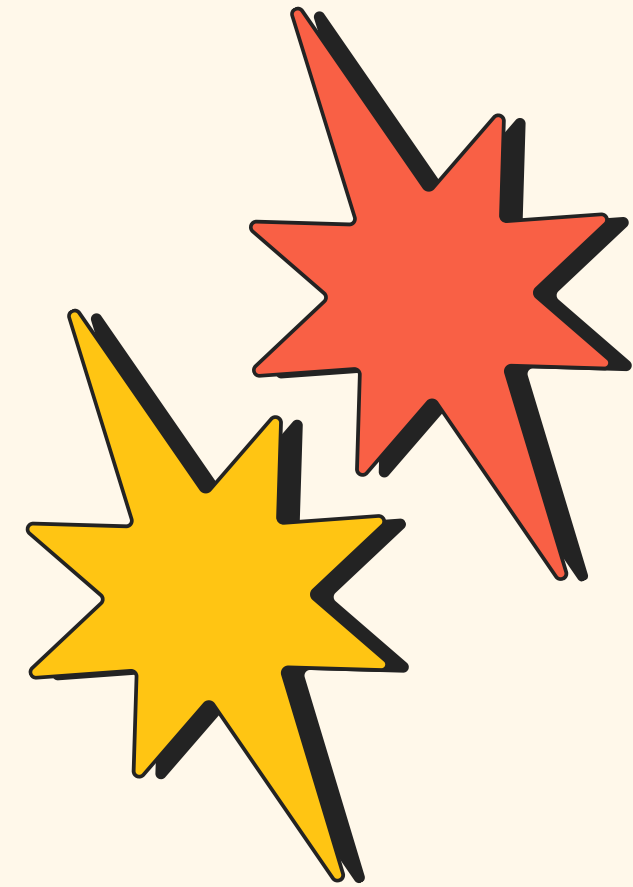
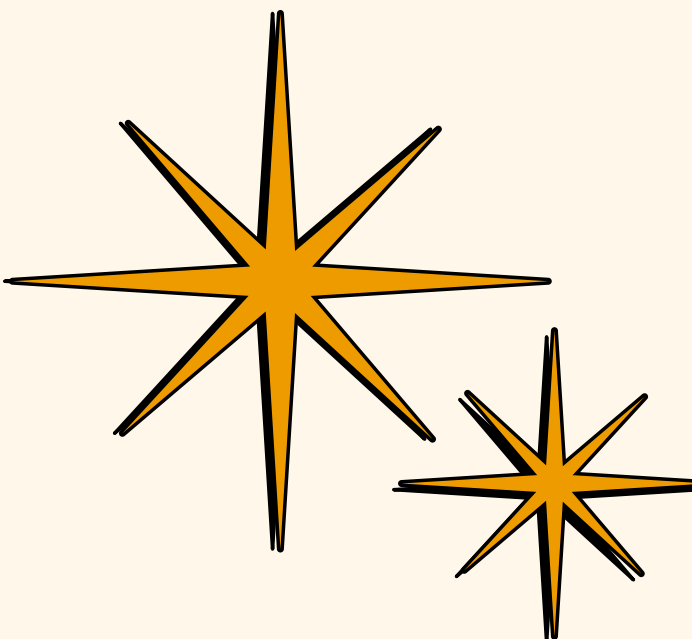
Landscape in Tennessee

- Anti-Trans Legislation
 - Gender Affirming Care Restrictions
 - Challenges when seeking support
 - National Context vs Local Context
- 
- 





Impact

- Fear of discrimination, harassment, or bias
 - Stigma and myths
 - Lack of LGBTQ+ specific resources or shelters
 - Potential trauma from negative past interactions
- 
- 



Trauma-Informed Affirming Services

- Safety
- Choice
- Collaboration
- Trustworthiness
- Empowerment





Practical Steps for Inclusivity

- Language
- Visual Indicators
- Review of Paperwork/Forms
- Staff Training
- Policy Review



Considerations


- Confidentiality
- Ethical Best Practices
- Mandatory Reporting



Collaborating with Community Partners

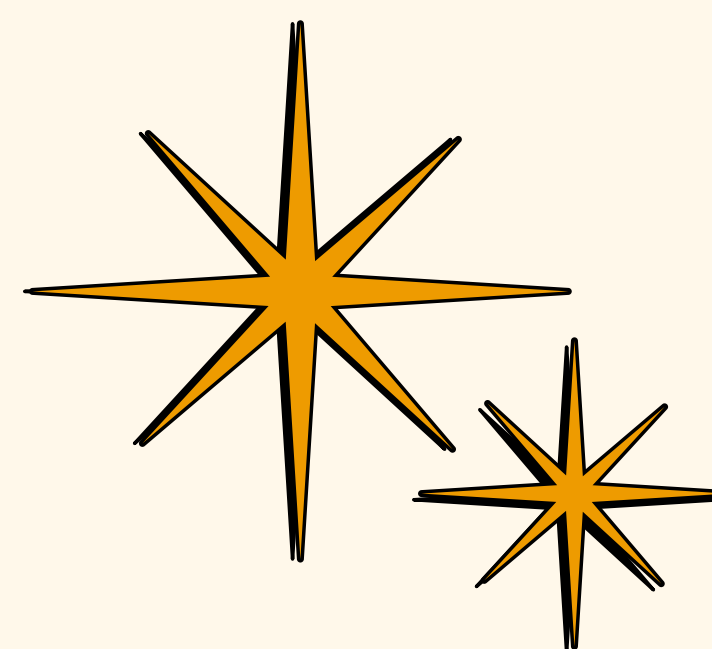
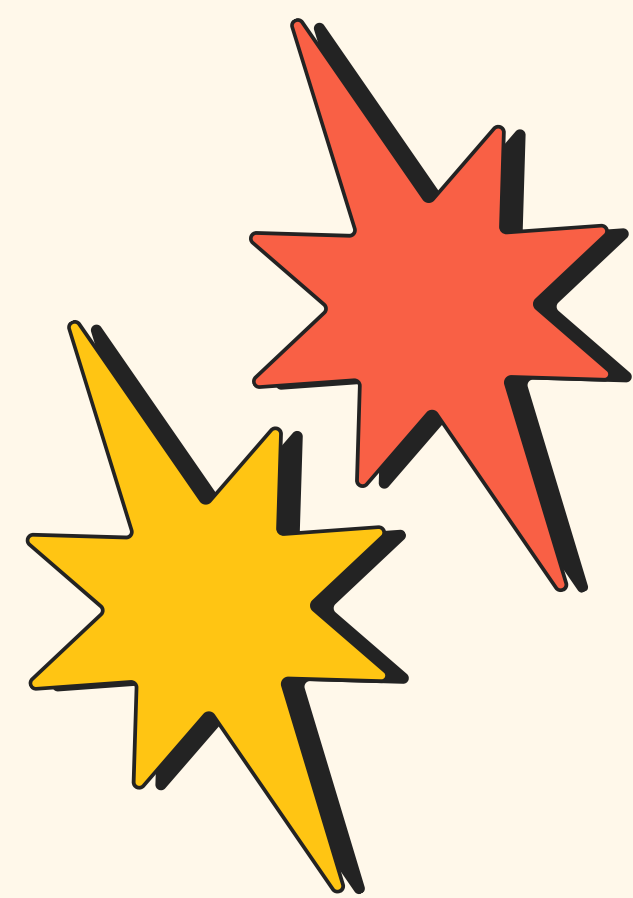
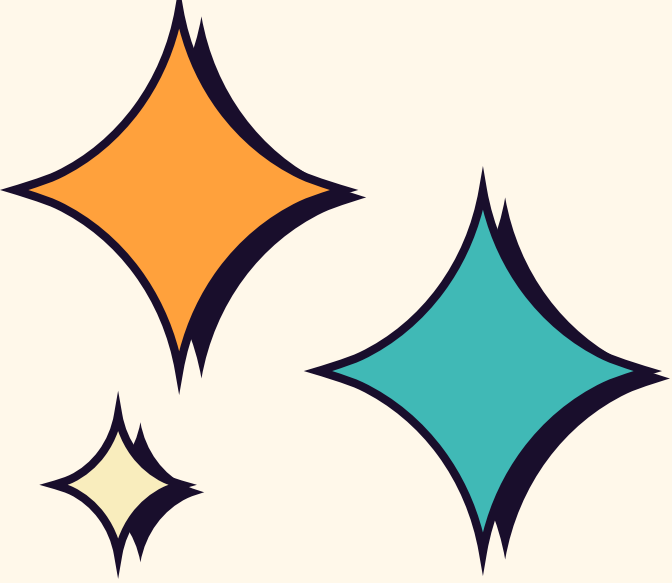
- Who is missing from the table?
- List relevant local LGBTQ+ centers, crisis hotlines, nonprofits, and social justice organizations
- How does your referral network look?





Actions Steps & Best Practices

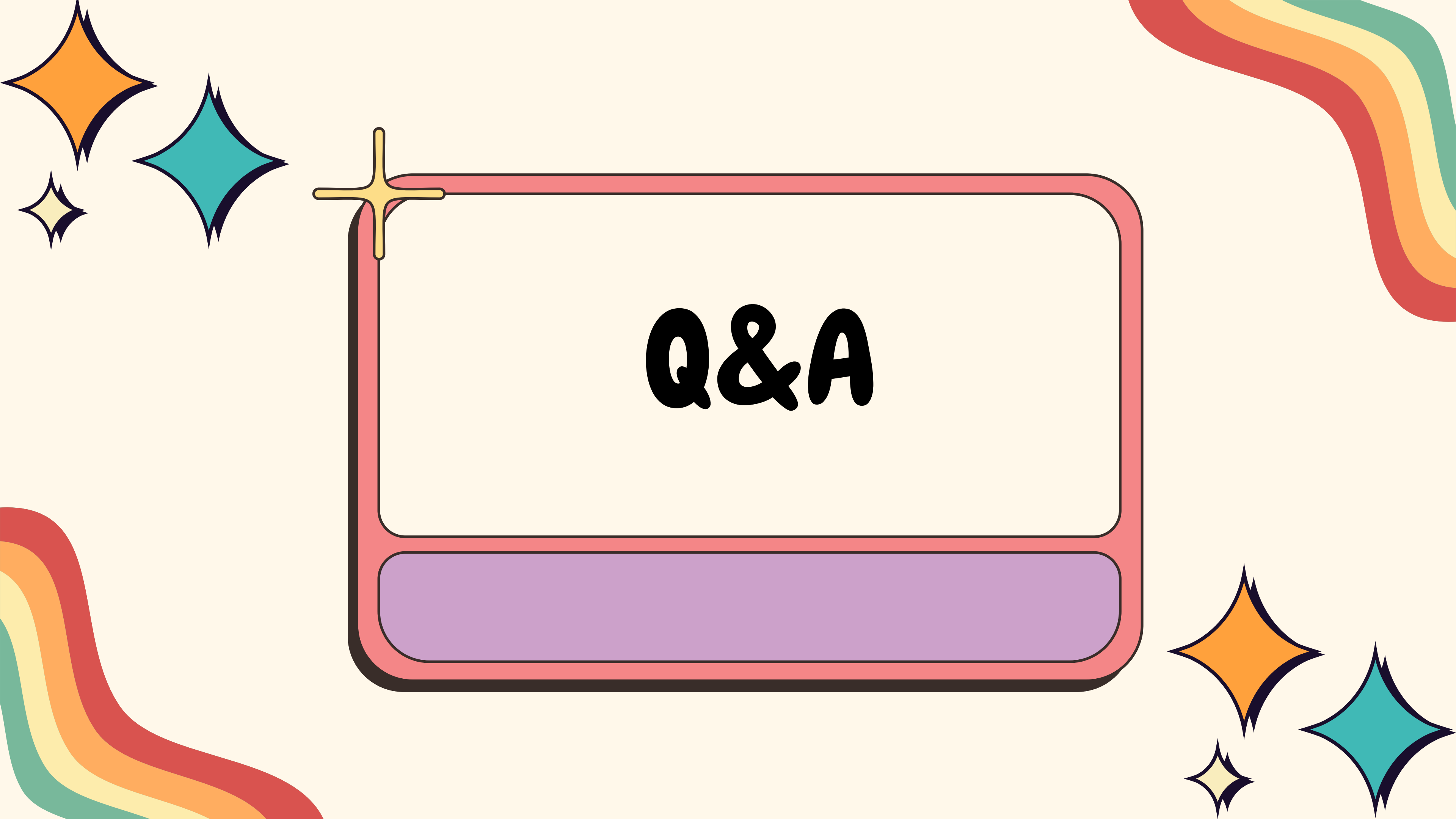
- Audit
- Commit
- Build
- Advocate



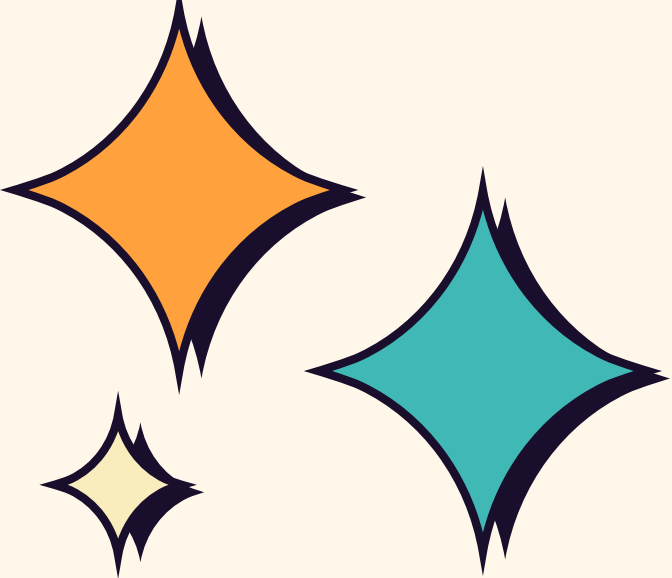
Resources

- Hotlines
- Websites
- Publications

Handout will be provided

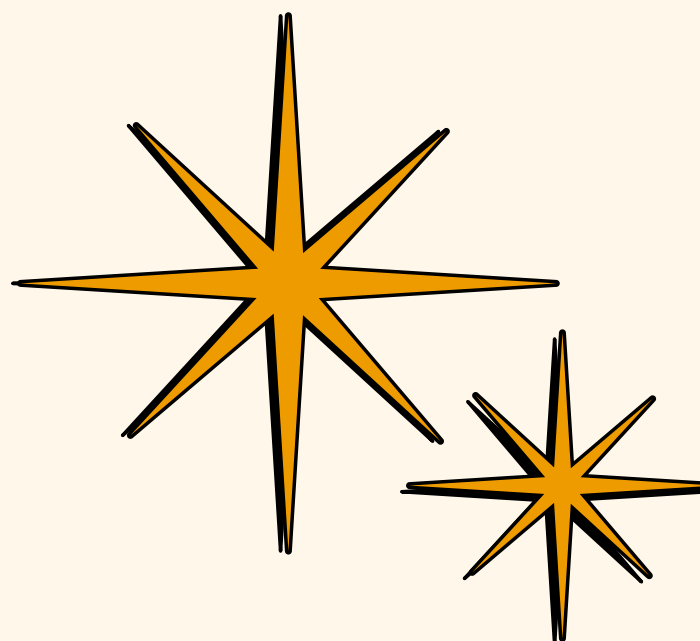
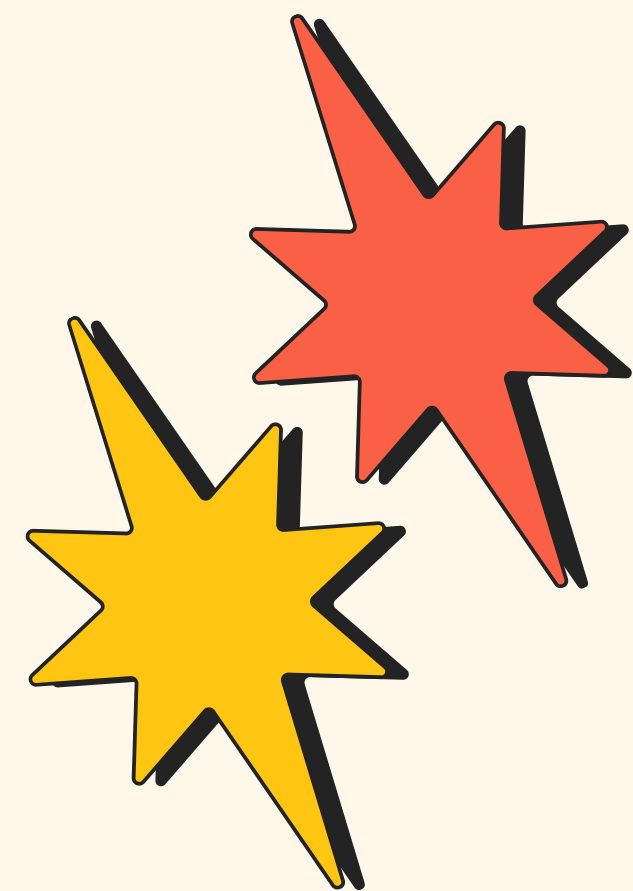


Q&A



Conclusion

Thank you for your commitment to ensuring inclusive, affirming care for LGBTQ survivors. May you leave this training prepared and empowered to foster lasting positive change in your communities.





CONTACT
ME

