

LAP Quick FAQs

When to Initiate the Lethality Screen:

When an **intimate relationship** is involved; AND ONE OF THE FOLLOWING:

- You believe an **assault** has occurred,
- You sense the potential for **danger** is high,
- Names of parties or location are **repeat** names or locations,
- You simply **believe** one should be conducted.

How to initiate a lethality assessment

- Use *Lethality Screen for Law Enforcement*.
- After asking questions, handle information as follows:
 - Yes to Q.1, 2, or 3 = Call the hotline
 - No to Q.1-3, but Yes to four of Q.4-11 = Call the hotline
- “No” responses may still warrant a hotline call if the officer believes it appropriate. Ask unnumbered question to help determine whether a hotline call should be made.

Victim is assessed as non-High Danger, or did/could not participate in assessment

1. Advise of dangerous situation.
2. Advise to watch for signs of danger.
3. Refer to provider.
4. Provide your contact information.
5. Prepare report.

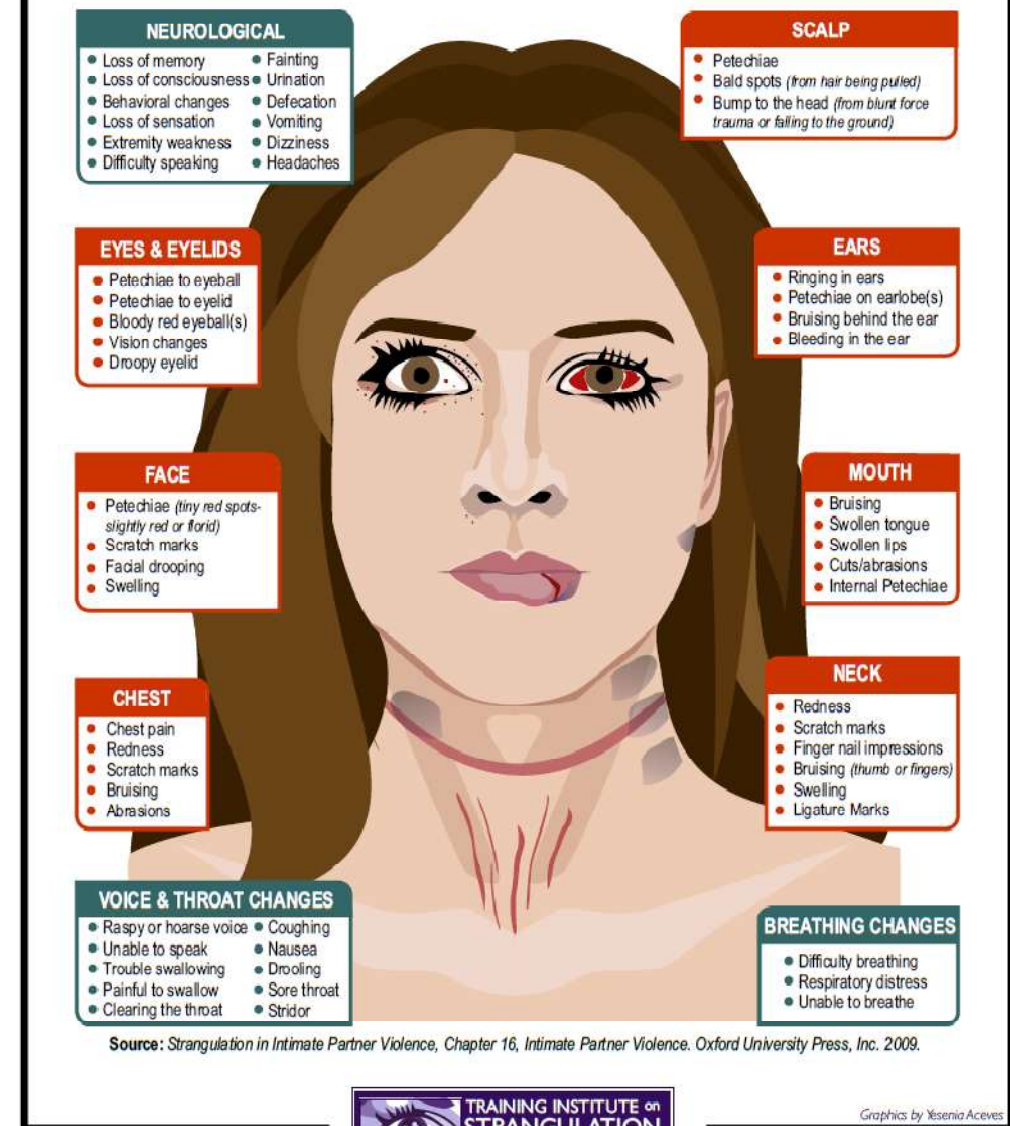
Victim is assessed as High-Danger—Referral Process

1. Explain assessment to victim.
2. Advise that you need to call hotline and you would like for victim to speak with an advocate. *(Remember: You are seeking the victim's permission.)*
3. If victim does not want to speak with an advocate, tell victim you need to speak with an advocate to seek guidance and gently ask victim to reconsider.
4. Call the hotline and give them the basic facts.
5. If victim still does not want to speak with an advocate, use same procedures as on the front of the card.
6. If victim wants to leave, arrange for or provide transportation.
7. Assist advocate with safety planning if asked.
8. Notify domestic violence unit or supervisor.
9. Prepare report.

Principles of the Lethality Assessment Program

- Be Compassionate and Encouraging.
- “Go The Extra Mile.”
- Coordinate Efforts.
- Use the Phone!
- Be Aware of the Dangers in All Domestic Violence Situations.
- Trust Your Instincts.
- Recognize That the Victim Is in Charge!

SIGNS AND SYMPTOMS OF STRANGULATION



Simply because of your presence as a law enforcement officer, the victim may feel compelled to speak with the hotline advocate when you ask. Tell the victim whether or not she/he chooses to speak with the advocate, **you are there to help her/him.**